



UNM Space Database (FAMIS)

Overview

2019



Background

- ❖ 2006 - Physical Plant Department hired a consultant to perform a Space Capacity Analysis
- ❖ 2007 - New “space” software, FAMIS, was approved
- ❖ 2009 - FAMIS was fully implemented by Planning and Campus Development – Space Management
- ❖ 2012 - Last Space Survey by Finance for the F & A (Indirect Cost Proposal)
- ❖ 2015 – Space Management was reorganized to the Physical Plant Department
- ❖ 2019 – Space Management reorganized to Capital & Space Strategies
- ❖ 2020 – FAMIS migration to cloud

What is FAMIS?

- **FAMIS** stands for Facilities Asset Management Information System
- **FAMIS** is an Oracle database. This database holds facilities data for all UNM buildings.
- **FAMISCAD** is a program that creates a direct link between AutoCAD drawings and FAMIS, thus creating a bi-directional link between our AutoCAD building floor plans, and the FAMIS database.
- **AutoCAD** is the computer aided drafting software that we use to maintain and update the building floor plans of record.

FAMIS AutoCAD Interface (FAMISCAD)

AutoCAD Floor Plans

The image shows a screenshot of the FAMISCAD interface. On the left, there is a window titled 'FAMIS DB (famis@dev.famis.com)' displaying a table of room data. On the right, there is a window titled 'AutoCAD 2004' showing a floor plan drawing with a color-coded legend. A large grey arrow points from the AutoCAD window to the FAMIS DB window, and another large grey arrow points from the FAMIS DB window to the AutoCAD window, indicating a bi-directional link.

Room ID	Room Name	Area	Volume	Cost	Notes
101	HALLWAY				
101E	ELEVATOR				
102	HALLWAY				
102A	MENS RESTROOM (TOILET)				
102B	LABYRINTH CLOSET	4000000	4001500	4001500	
103	HALLWAY	4000000	4001500	4000000	4001500
103E	ELEVATOR	4000000	4001500	4000000	
104	HALLWAY	4000000	4001500	4000000	
104A	WOMENS RESTROOM (TOILET)	4000000	4001500	4000000	
105	JETTYMECHANICAL ROOM	4000000	4001500	4000000	
106	HALLWAY	5000000	5001500	5000000	
107	JETTYMECHANICAL ROOM	5000000	5001500	5000000	
108	OFFICE	4000000	4001500	4001500	
108A	CLOSET/STORAGE	4000000	4001500	4000000	

FAMIS Database

FAMIS: Benefits

- **FAMIS** produces the BR&R report of eligible I&G space which directly ties to formula funding dollars from the State .
- **FAMIS** provides all spacial data for the F&A report which directly ties to UNM's Indirect Cost Rate proposal .
- **FAMIS** allows UNM to benchmark other Higher Education institutions by using National space standards (FICM codes) from the US Department of Education.
- **FAMIS** allows you to have access to view data and floor plans through Self-Service when you need it.
- **FAMIS** uses reporting tools which provides Standardized Reports when you need them.
- **FAMIS** provides data for administration for Accreditation, Planning, Budgets and Strategic Initiatives.

FAMIS Components

Self-Service – Space Survey

famis Logout
Change Password

SS Admin | **SPACE SURVEY** | VSP console | Visual Map

Select Room

Site=A, ALBUQUERQUE : Bldg=002, ENGINEERING AND SCIENCE COMPUTER PO :

Batch ID Name:

Building Description	Floor Room	Room Desc	Area	Allocation	Employee	Allocation Group	Survey Date
A 0002 ENGINEERING AND SCIENCE COMPUTER PO	01 115	Y0400-UTILITY/MECHANICAL SPACE	59			PPD Maintenance	
A 0002 ENGINEERING AND SCIENCE COMPUTER PO	01 100A	W0600-PUBLIC CORRIDOR	204			PPD Maintenance	
A 0002 ENGINEERING AND SCIENCE COMPUTER PO	01 101	X0300-PUBLIC REST ROOM	117			PPD Maintenance	
A 0002 ENGINEERING AND SCIENCE COMPUTER PO	01 110	11000-CLASSROOM	692			Registers Off	
A 0002 ENGINEERING AND SCIENCE COMPUTER PO	01 115	Y0400-UTILITY/MECHANICAL SPACE	59			PPD Maintenance	
A 0002 ENGINEERING AND SCIENCE COMPUTER PO	01 101	W0600-PUBLIC CORRIDOR	1054			PPD Maintenance	
A 0002 ENGINEERING AND SCIENCE COMPUTER PO	01 101	11000-CLASSROOM	692			Registers Off	

Edit Space Sub Cat Information

Site=A, ALBUQUERQUE : Bldg=0204, SERVICE BUILDING : Floor=01, FIRST : Room=12CU10, 31002-OFFICE - STAFF

Location	Room Info	Space Sub Cat	Groups	Employee	Functional Use	Room Contacts	Equipment	Accounts	Summary
A 0002 ENGINEERING AI	31002	OFFICE - STAFF							
								100.00	77.00
Total								100.00	77.00

Add Space Sub Cat | Del Space Sub Cat

Save/Preview | Save/Return | Cancel

FAMISCAD – Graphical Reports (back end)

UNM PLANNING & CAMPUS DEVELOPMENT

ALLOCATED GROUP
Student Services Center
Basement Floor

Print Date: 08/22/09 | Last Modified Date: 08/22/09

Self-Service – Visual Map

famis Logout
Change Password

SPACE SURVEY | Visual Map

FAMIS Visual Map

Room No: [] Room Sub-Category: [] [ALBUQUERQUE] [0103] HODGGIN HALL [01] FIRST Room Sub-Category: []

Legend:

- 0000-Unclassified
- 31000-Office
- 31010-Office Service
- 35000-Conference Rm
- 60000-Meeting Room
- 65000-Meeting Room
- W0200-Elevator
- W0500-Lobby
- W0600-Public Corridor
- W0700-Stairway
- WWW-Circulation Area
- X0300-Public Rest Room
- Y0400-Utility/Mechanical

Room No: [] Room Sub-Category: [] [ALBUQUERQUE] [0103] HODGGIN HALL [01] FIRST Room Sub-Category: []

1: 245 | 131 x 95.7 (ft) | Powered by FAMIS

Discoverer – Standardized Reports

Univ. of New Mexico
Date: 28-OCT-09
Page: 1 of 1

Table

Tools | Layout | Format | Spotlight | Sort | Rows and Columns

Site	Building Code	Building Name	Building Address	Year Built	NASF
1	A 0002	ENGINEERING AND SCIENCE COMPUTER PO	201 TERRACE ST. N.E.	1916	9,868
2	0004	CARLISLE GYMNASIUM	301 YALE BLVD. N.E.	1928	34,010
3	0008	BANDELIER HALL EAST	401 TERRACE ST. N.E.	1930	8,285
4	0009	MARRON HALL	201 YALE BLVD. N.E.	1931	14,825
5	0010	SCHOLLES HALL	1800 ROMA AVE. N.E.	1936	30,755
6	0011	ANTHROPOLOGY	500 UNIVERSITY BLVD. N.E.	1937	50,656
7	0012	ANTHROPOLOGY ANNEX	301 TERRACE ST. N.E.	1937	6,610
8	0014	SCIENCE & MATH	311 TERRACE ST. N.E.	X	36,501
9	0015	HIBBEN CENTER FOR ARCHAEOLOGY RESEA	450 UNIVERSITY BLVD. N.E.	2001	38,351
10	0016	BANDELIER HALL WEST	400 UNIVERSITY BLVD. N.E.	1941	11,147
11	0018	BIOLOGY RESEARCH GREENHOUSE	217 YALE BLVD. N.E.	1991	2,285
12	0019	BIOLOGY ANNEX	200 TERRACE ST. N.E.	1948	11,379
13	0020	LINK IMPLEMENTATION AND FINANCE SUP	1801 ROMA AVE. N.E.	1930	2,272

Responsibilities

Departments

Level 5 Orgs must coordinate changes and make updates to their allocated space.

- **Assign Group Members and Contacts**
 - Contact(s): Responsible all allocated space and the Space Survey.
 - Member(s): Assigned to update space
- **Report Changes**
 - Remodel modifications to Space Management
 - Cubical modifications to Space Management
 - Re-organizations
- **Perform Room Updates**
 - Org code & Space Sub-Category
 - Function Code and Accounts
 - Contacts & Employees
- **Archiving**

Space Management

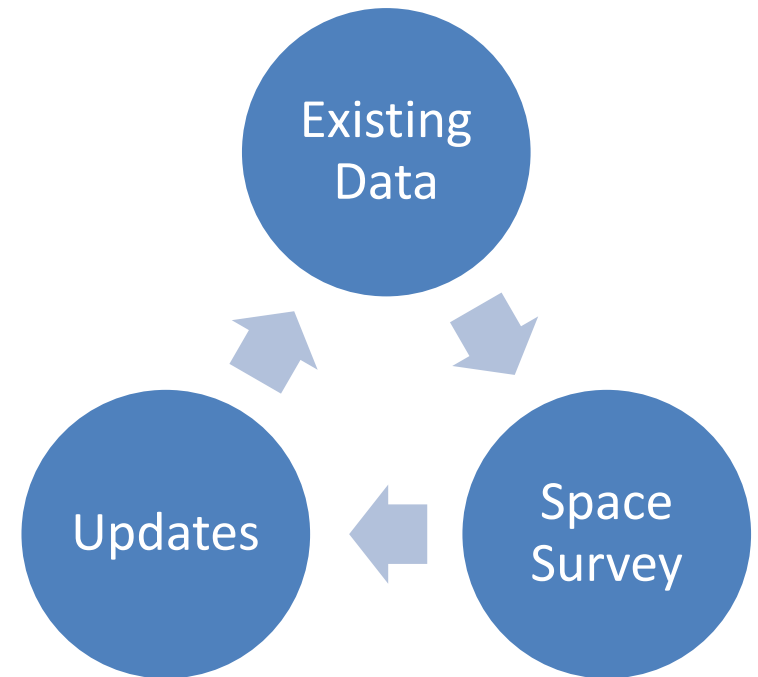
Space Management must maintain key base data for use by the Unit.

- **Floor Plans**
 - Update physical changes in building/room
 - Update cubical layouts where required.
- **Base Data**
 - Prep room allocations for Unit updates
 - Building
 - Floor
 - Room
 - Org
- **FAMIS Help**
- **Archiving (Allocation Roll-over)**

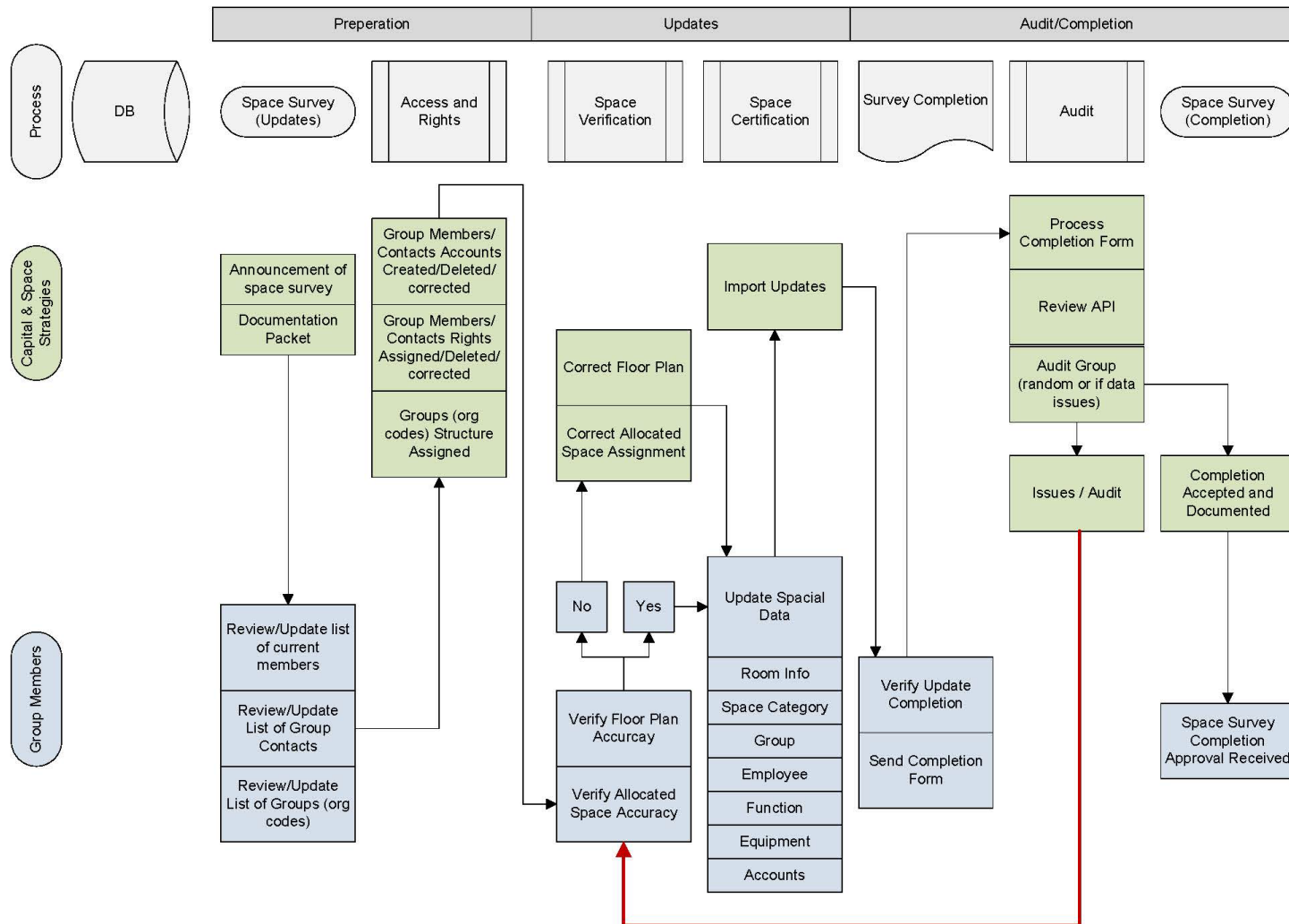


Space Survey Project Steps

1. Scope
2. Development
3. Access and Rights
4. Perform Space Survey
 - a) Check Existing Data & Floor Plans
 - b) Coordinate Floor Plan Updates
 - c) Edit/Update Room by Room Data
 - d) Sign off
5. Random Space Audits
6. Close-out / Data Pulls



Space Survey Update Process



Useful Information / Links

- FAMIS is available via the web.
Individual login accounts to the site will be required.
 - Space Management webpage
 - <https://fm.unm.edu/services/space-database-famis.html>
 - FAMIS Portal
 - <https://famisportal.unm.edu>
 - FAMIS Help Line
 - 277-3800 or space@unm.edu