

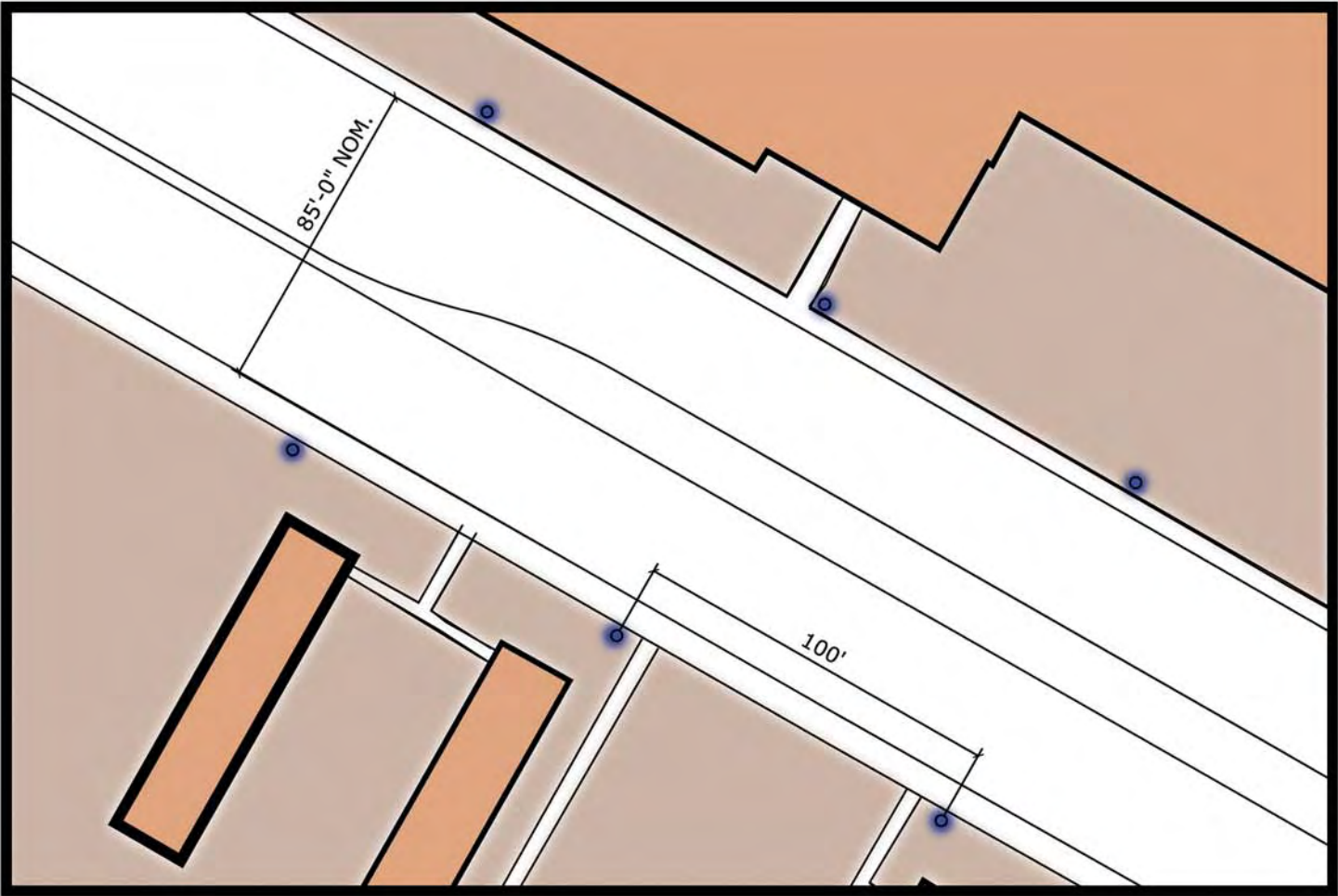
LIGHTING RECOMMENDATIONS							
CATEGORY	POLE LUMINAIRE					ILLUMINANCE	
	HEIGHT	TYPE	LAMP	WATTS	SPACING	AVERAGE FOOTCANDLES	UNIFORMITY RATIO
ROADWAYS							
Major Roadways	25'	Full Cutoff Distribution Type 3	Metal Halide	250	100' o.c. Paired	1.5	3:1
Campus Roadways	15'	Full Cutoff Distribution Type 4	Metal Halide	100	65' o.c. Staggered	1	4:1
Minor Campus Roadways	15'	Full Cutoff	Metal Halide	100		.75	4:1
Service Drives	Bldg. Mtd.	Cutoff	Metal Halide	100		.5	6:1
WALKWAYS - ADJACENT TO ROADWAYS							
Major Roadways	25'	Full Cutoff Distribution Type 3	Metal Halide	250	100' o.c. Paired	1	4:1
Campus Roadways	15'	Full Cutoff Distribution Type 4	Metal Halide	100	65' o.c. Staggered	.75	4:1
WALKWAYS - INTERNAL CAMPUS							
Pedestrian Malls/Plazas	14'	Full Cutoff	Metal Halide	70 / 50	NOTE 4	1	4:1
Walkways	14'	Full Cutoff Distribution Type 2	Metal Halide	50	65'	.75	4:1
Park Area Walkways	14'	Full Cutoff Distribution Type 2	Metal Halide	70	100' o.c.	.5	4:1
Elevated Walkways	3'	Cutoff	Metal Halide	39		.5	6:1

1. Footcandles are average maintained at the ground.
2. Uniformity ratio is the average footcandle level to the minimum footcandle level.
3. Parking lot level will depend on the specific location on campus.
4. Layout to be specific to individual mall.

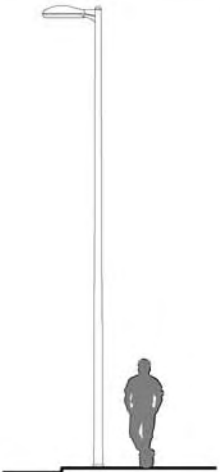


TYPICAL MAJOR ROADWAY LAYOUT

- STREET SCALE FIXTURE
- 250 WATT METAL HALIDE - SL1



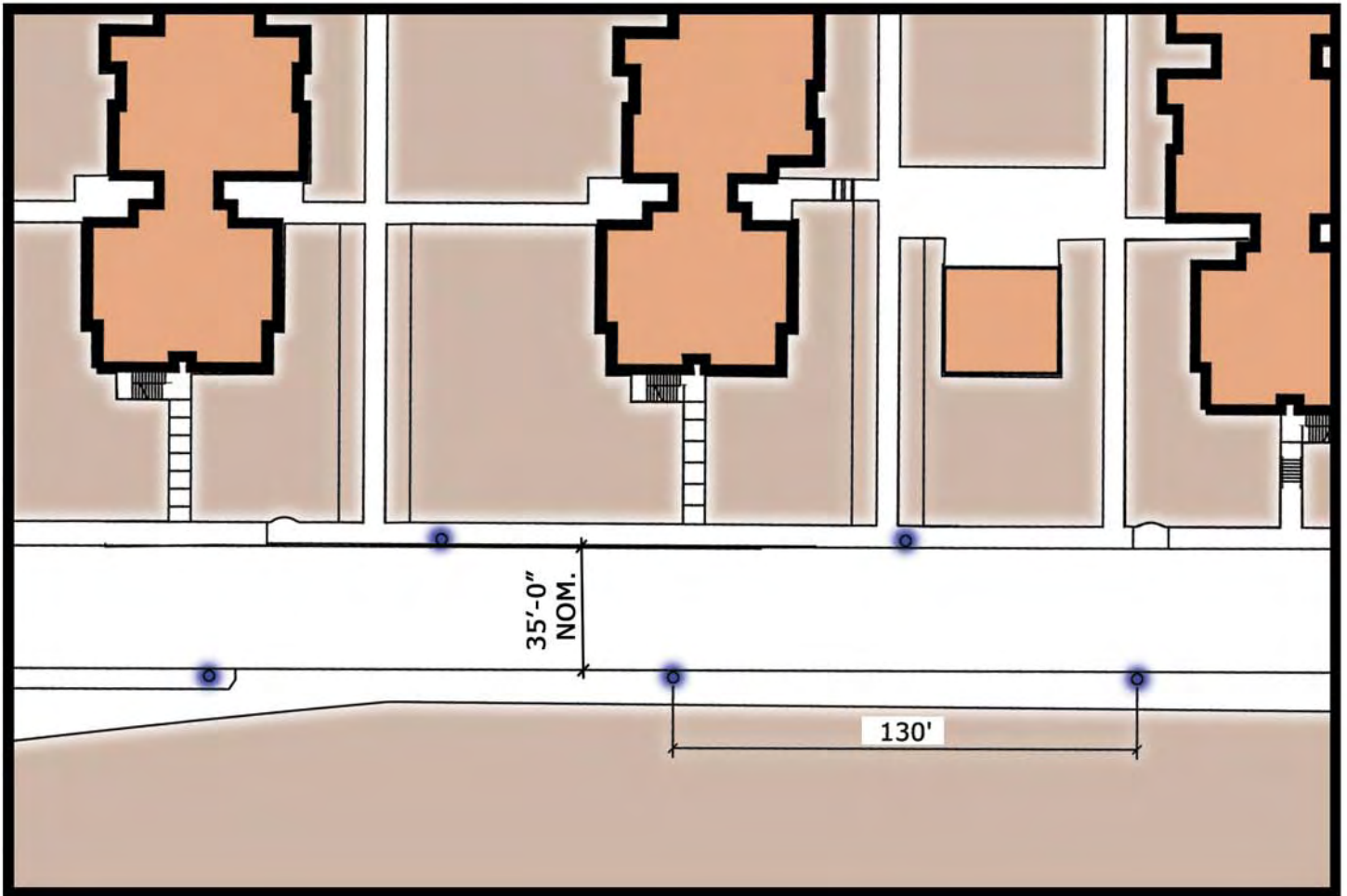
LIGHTING RECOMMENDATIONS							
CATEGORY	POLE LUMINAIRE					ILLUMINANCE	
	HEIGHT	TYPE	LAMP	WATTS	SPACING	AVERAGE FOOTCANDLES	UNIFORMITY RATIO
Major Roadways	25'	Full Cutoff	Metal Halide	250	100' o.c. Paired	1.5	3:1





## TYPICAL CAMPUS ROADWAY LAYOUT

- PEDESTRIAN SCALE FIXTURE  
100 WATT METAL HALIDE - PM1



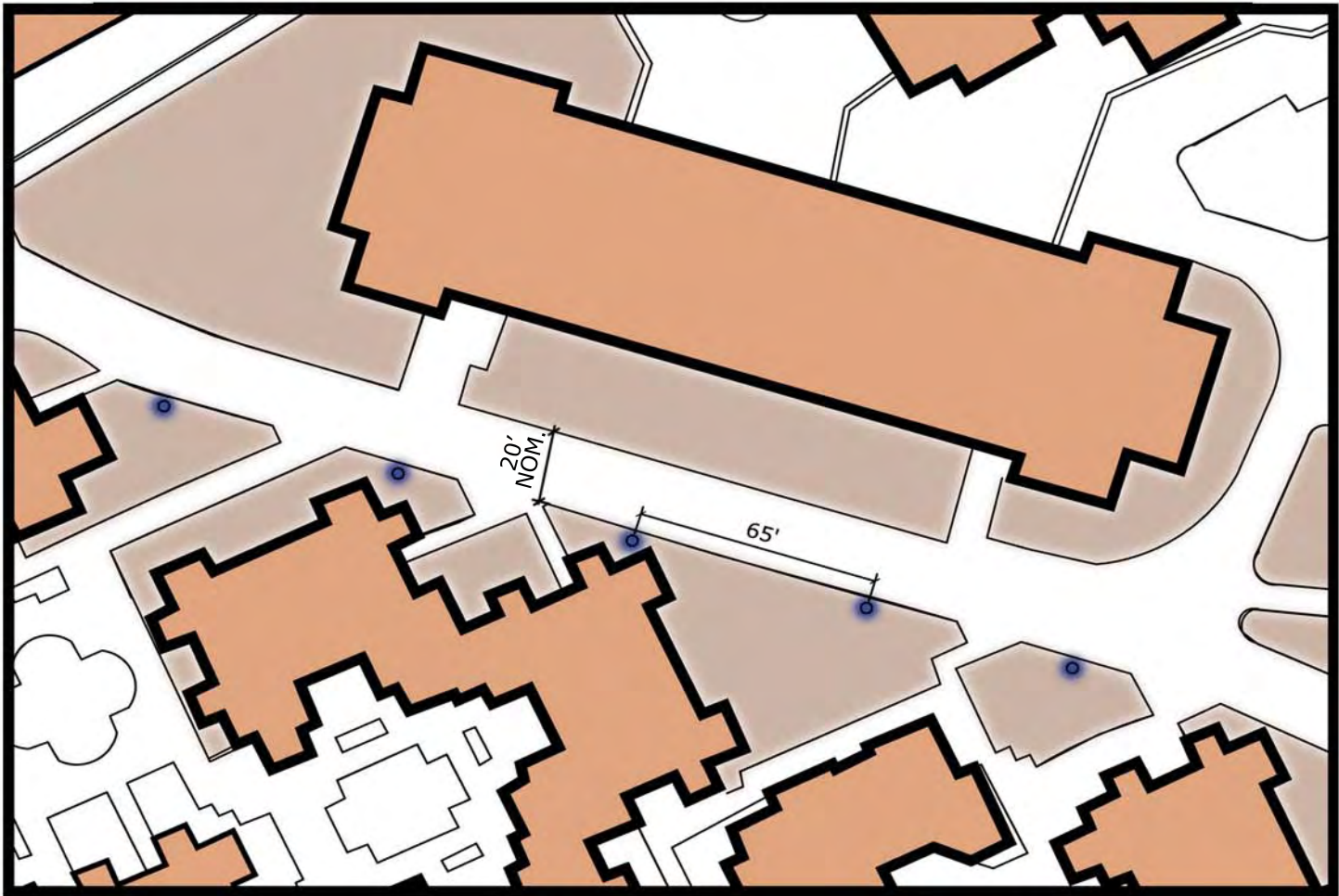
LIGHTING RECOMMENDATIONS							
CATEGORY	POLE LUMINAIRE					ILLUMINANCE	
	HEIGHT	TYPE	LAMP	WATTS	SPACING	AVERAGE FOOTCANDLES	UNIFORMITY RATIO
Campus Roadways	15'	Full Cutoff Distribution Type 4	Metal Halide	100	65' o.c. Staggered	1	4:1



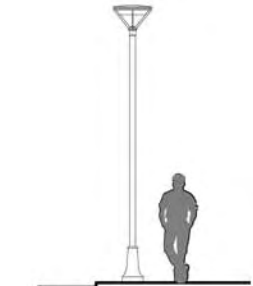


TYPICAL CAMPUS WALKWAYS LAYOUT

- PEDESTRIAN SCALE FIXTURE
- 50 WATT METAL HALIDE - PM2



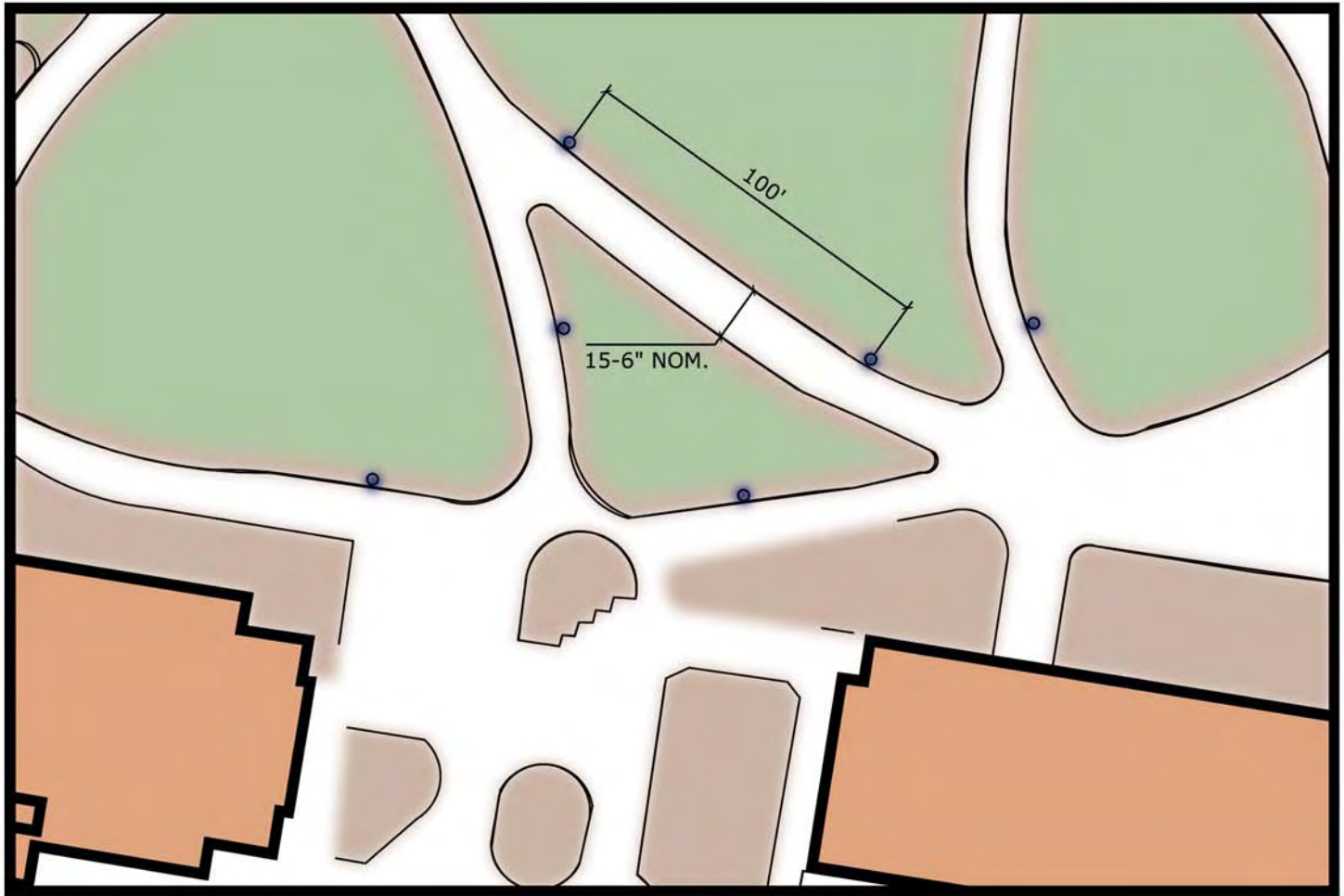
LIGHTING RECOMMENDATIONS							
CATEGORY	POLE LUMINAIRE					ILLUMINANCE	
	HEIGHT	TYPE	LAMP	WATTS	SPACING	AVERAGE FOOTCANDLES	UNIFORMITY RATIO
Walkways	14'	Full Cutoff	Metal Halide	50	65'	.75	4:1



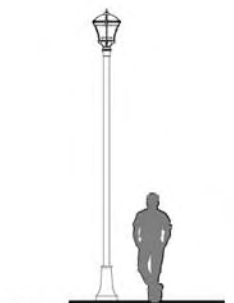


## TYPICAL PARK AREA WALKWAYS LAYOUT

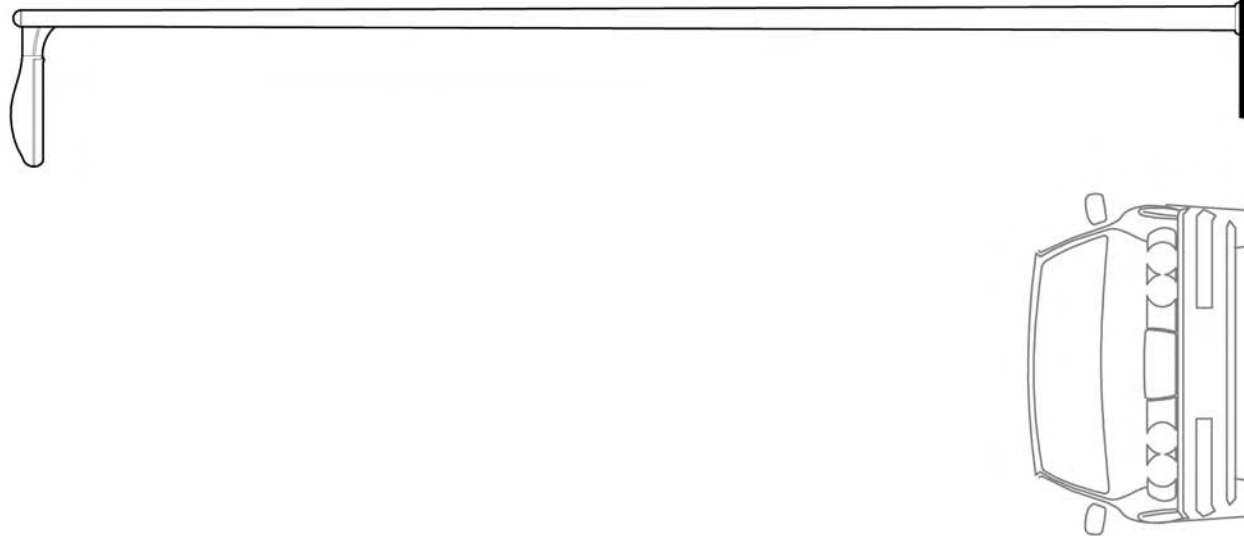
- PEDESTRIAN SCALE FIXTURE  
70 WATT METAL HALIDE - PM3



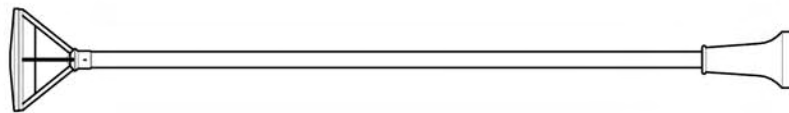
LIGHTING RECOMMENDATIONS							
CATEGORY	POLE LUMINAIRE					ILLUMINANCE	
	HEIGHT	TYPE	LAMP	WATTS	SPACING	AVERAGE FOOTCANDLES	UNIFORMITY RATIO
Park Area Walkways	14'	Full Cutoff	Metal Halide	70	100' o.c.	.5	4:1







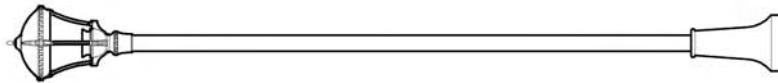
25' MAJOR  
ROADWAY  
FIXTURE



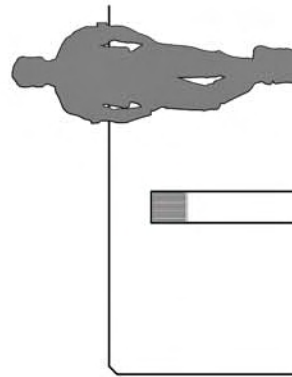
15' CAMPUS  
ROADWAY  
FIXTURE



14' INTERNAL  
CAMPUS WALKWAY  
FIXTURE



14' PARK AREA  
WALKWAY  
FIXTURE



3' ELEVATED  
WALKWAY  
FIXTURE



## BUILDING MOUNTED FIXTURE

**TYPE:** BF1

FULL CUTOFF BUILDING MOUNTED AREA LIGHT FIXTURE  
- FOR LOW MOUNTING HEIGHTS

**MANUFACTURER:**  
GARDCO LIGHTING

**MODEL:**  
101-MT-42TRF-VOLT-TBD-PCB-WS\*  
\* WS ONLY TO BE SPECIFIED WHEN SURFACE CONDUIT IS USED.

**LUMINAIRE DIMENSIONS: (LxWxH)**  
16-1/4" x 9" x 7"

**LAMP:**  
42 WATT TRIPLE COMPACT FLUORESCENT, 4-PIN

**FINISH:**  
TO BE DETERMINED

**MOUNTING HEIGHT:**  
SURFACE MOUNTED 6'-0" TO 12'-0" ABOVE FINISH GRADE.

### **SPECIFICATION:**

**HOUSING:** SINGLE PIECE DIECAST ALUMINUM WITH RAIN AND DUST TIGHT GASKET SEALS ON DOORFRAME. DOORFRAME TO BE DIECAST ALUMINUM GASKETED, WITH HINGED AND SECURED WITH 2 CAPTIVE STAINLESS STEEL FASTENERS.

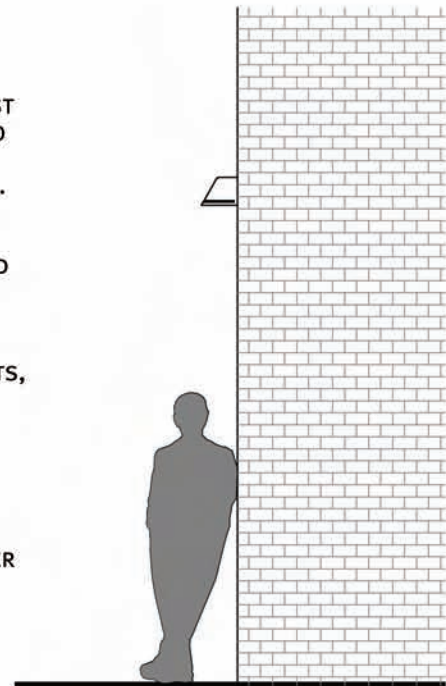
**SHIELDING:** HEAT AND IMPACT RESISTANT 1/8" GLASS LENS AND ONE-PIECE GASKET WHICH ARE MECHANICALLY SECURED TO THE DOORFRAME WITH 4 GALVANIZED STEEL RETAINERS.

**REFLECTORS:** SPECULAR EXTRUDED AND FACETED ALZAK COMPONENTS, ELECTRO-POLISHED, ANODIZED AND SEALED.

**BALLAST:** ELECTRONIC HIGH POWER FACTOR WITH A STARTING TEMPERATURE OF 0° F.

**FINISHES:** FADE AND ABRASION RESISTANT, ELECTROSTATICALLY APPLIED, THERMALLY CURED, TGIC TEXTURED POLYESTER POWDERCOAT FINISH. COLOR TO BE SELECTED BY UNIVERSITY.

**LABELS:** UL WET LABEL.





**DESCRIPTION**

ENTRI Series' family of modular faceplate designs provide a tasteful architectural statement equally suitable for indoor and outdoor environments. Available luminous faceplate window adds a signature look, while affording custom color capability.

**SPECIFICATION FEATURES****A...Housing**

One piece die-cast aluminum construction for precise tolerance control and repeatability in manufacturing. Accommodates either up or down mounting configurations with no modifications. Downlight and uplight lens' are impact resistant 5/32" thick tempered clear or frosted flat glass, sealed to the housing with high strength VHB adhesive tape and a continuous silicone bead gasket. Silicone wireway plug on housing back wall seals incoming electrical leads to prevent moisture and dust entry.

**B...Faceplate**

One piece die-cast aluminum faceplate utilizes a continuous silicone gasket to seal securely to housing. Side hinged faceplate swings open via release of one (1) flush mount die-cast aluminum latch on housing side panel. Available luminous glass insert is .16" thick frosted glass, secured to back of faceplate with a continuous EPDM gasket. Available colored gel film secures behind glass.

**C...Optical System**

Choice of ten (10) high efficiency optical systems constructed of premium 95% reflective anodized aluminum sheet, or bright specular anodized polished spun aluminum. Available distributions include Type III, Type III with 10% secondary glow, Type III with pencil secondary, Forward Throw, Forward Throw with 10% secondary glow, Forward Throw with pencil secondary, FX grazing optic, FXF 50% up/50% down grazing optic, Tight Spot, and 50% up/50% down Tight Spot. Optical segments are rigidly mounted inside a heavy wall aluminum housing for superior protection. All segment faces are clean of rivet heads, tabs, or other means of attachment which may cause streaking in the light distribution.

All reflector modules feature quick disconnect wiring plugs. T6 Metal Halide lamps feature G12 lampholders, White Son™ High Pressure Sodium lamp features a GX12 lampholder, Quartz Halogen lamps feature mini-can screw based lampholders, and Compact Fluorescent lamps feature GX24q-(3,4,5) 4-pin lampholders.

**D...Electrical Components**

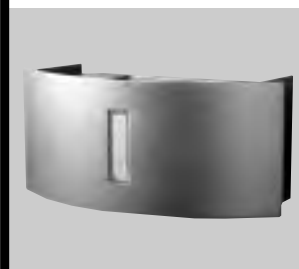
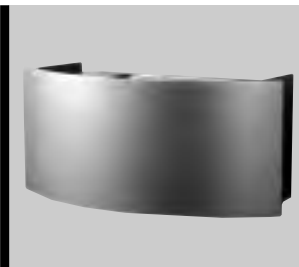
Ballast and related electrical componentry are heat sunk to the housing for cooler operation and prolonged life.

**E...Mounting**

Standard zinc plated attachment plate mounts directly to 4" J-Box. Fixture slides over mounting plate and is secured with two (2) concealed stainless steel fasteners. Mounting plate features one-piece, EPDM gasket on back side of plate to firmly seal fixture to wall surface, forbidding entry of moisture and particulates. Optional mounting arrangements utilize a die-cast aluminum adapter box to allow for surface conduit wiring, quartz lamp options, and emergency battery pack capability.

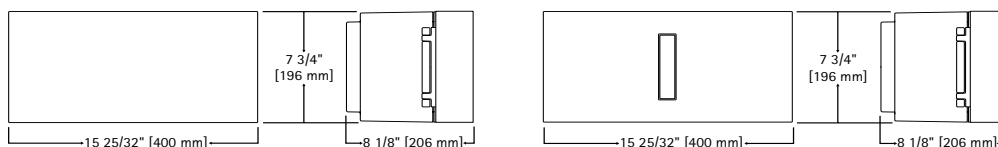
**F...Finish**

Housing finished in a 5 stage premium TGIC polyester powder coat paint, 2.5 mil nominal thickness for superior protection against fade and wear. Standard colors include black, bronze, grey, white, dark platinum, and graphite metallic. RAL and custom color matches available. Consult your INVUE Lighting Systems Representative for more information.

**ENC ENTRI  
ROUND CLEAN****26 - 250W**

**Metal Halide**  
**WhiteSON High Pressure**  
**Sodium**  
**Compact Fluorescent**  
**Quartz Halogen**

**ARCHITECTURAL WALL  
LUMINAIRE**

**DIMENSIONS****Wattage Table**

	ENC
Metal Halide	39, 70, 100, 150W
White Son HPS	100W
Compact Fluorescent	26, 32, 42, 57W
Dual Compact Fluorescent	(2) 26, (2) 32, (2) 42W
Quartz Halogen	100, 150, 250W

**Certifications**

IP66 Rated	U.L. 1598		FCO
CSA Listed	25°C Ambient	ISO 9001	Full Cutoff

\*In downlight only configurations with no faceplate window.

**SHIPPING DATA** (approx.)  
**Net Weight** (lbs.): 13  
**Volume** (cu. ft): 4.5

**COOPER Lighting**  
www.cooperlighting.com

Consult your representative for additional options and finishes.

AVU032304

**GRENALD WALDRON ASSOCIATES**

ARCHITECTURAL  
LIGHTING  
CONSULTANTS

PO BOX 525  
260 HAVERFORD  
AVENUE  
NARBERTH PA  
19072 0525

TEL 610 667 6330  
FAX 610 667 7658

THE UNIVERSITY OF NEW  
MEXICO  
ALBUQUERQUE CAMPUS

PROJECT No. 22027

TYPE BF1





## ORDERING INFORMATION

SAMPLE NUMBER: ENC-150-MH-120-EB-3S-BK-LG-L

ENC	42	CF	TBD	EB	CFM			PC	
<b>Product Family</b> ENC=ENTRI Round Clean	<b>Lamp Wattage</b> <sup>1</sup> <b>HID</b> 39=39W 70=70W 100=100W 150=150W <b>Compact Fluorescent</b> <sup>2</sup> 26=26W 32=32W 42=42W 52=52W <sup>3</sup> 57=57W <sup>4</sup> 64=64W <sup>3</sup> 84=84W <sup>3</sup> <b>Halogen</b> <sup>5</sup> 100=100W 150=150W 250=250W  <b>Lamp Type</b> MH=Metal Halide WS=White SON High Pressure Sodium <sup>6</sup> CF=Compact Fluorescent <sup>7</sup> HL=Quartz Halogen	<b>Voltage</b> <sup>8</sup> 120=120V 208=208V 240=240V 277=277V 347=347V DT=Dual-Tap Wired 277V <sup>9</sup> MT=Multi-Tap Wired 277V <sup>9</sup> TT=Triple-Tap Wired 347V <sup>9</sup>  <b>Ballast</b> MB=Magnetic (HID only) EB=Electronic <sup>10</sup> X=None (for Halogen Lamp)	<b>Distribution</b> <b>Downlight or Uplight (HID or Halogen)</b> 3S=Type III FT=Forward Throw FX=Wall Grazing Optic TS=Tight Spot <b>Downlight and Uplight (HID and Halogen)</b> 3SG=Type III, 90% Main/10% Secondary Glow 3SP=Type III with Pencil Secondary FTG=Forward Throw, 90% Main/10% Secondary Glow FTP=Forward Throw with Pencil Secondary FXF=Wall Grazing Optic, 50% up/50% Down TSF=Tight Spot, 50% up/50% Down <b>Compact Fluorescent</b> CFM=100% Main, Up or Downlighting CFG=90% Main + 10% Secondary Glow	<b>Colors</b> (add as suffix/must specify) <sup>11</sup> BK=Black AP=Grey BZ=Bronze WH=White DP=Dark Platinum GM=Graphite Metallic  <b>Optional Luminous Faceplate Insert</b> (add as suffix) LGO=Luminous Glass Insert with Warm Orange Gel LGR=Luminous Glass Insert with Red Gel LGB=Luminous Glass Insert with Bright Blue Gel LGG=Luminous Glass Insert with Deep Green Gel	<b>Options</b> (add as suffix) F=Single Fuse (120, 277, or 347V) Specify Voltage FF=Double Fuse (208V, 240V or 480V) Specify Voltage DSAB=Dual Fluorescent Switching Control Adapter Box <sup>12</sup> QAB=Quartz Restrike Adapter Box EMAB=Quartz Restrike with Delay Adapter Box (Also Strikes at Cold Start) EM/SCAB=Quartz Emergency Separate Circuit Adapter Box CF/EMAB=Emergency Battery Backup Adapter Box <sup>13</sup> PC=Button Type Photocontrol (specify voltage) WG=Wire Guard FRM=Frosted Main Flat Glass FRS=Frosted Secondary Flat Glass <sup>14</sup> L=Lamp Included (Standard for all <b>Halogen</b> lamps)	<b>Accessories</b> (order separately/replace XX with color suffix) <b>VA2001-XX</b> =Thru-way Box			

**NOTES:** 1 All MH lamps are T6 envelope with G12 lamp base. All HPS lamps are T6 envelope with GX12 lamp base.

2 All 26/32/42/57W CF lamps feature a 4-pin lamp base. Available in CFM and CFG distributions only.

3 Dual compact fluorescent lamps.

4 Nominal M.O.L lamp length of 57W CFL not to exceed 7".

5 All Halogen lamps are T4 envelope with mini-can base.

6 WhiteSON HPS lamp available in 100W only. Requires electronic ballast. 120/277V only. Requires use of VA2001 accessory Thru-way Box.

7 Compact Fluorescent ballasts contain internal fusing. No supplemental fusing is necessary. CF ballasts are 120 through 277V.

8 Products also available in non-US voltages and 50Hz for international markets. Consult factory for availability and ordering information.

9 Dual-tap is 120/277V wired 277V. Multi-tap is 120/208/240/277V wired 277V. Triple-tap is 120/277/347V wired 347V.

10 120 through 277V only. Electronic ballasts contain internal fusing, no supplemental fusing is necessary. Electronic ballast available with all CF lamps, and 39/70/100W MH lamps. Available with 150W MH lamp with use of VA2001 accessory Thru-way Box.

11 Custom and RAL color matching available upon request. Consult your INVUE Lighting Systems Representative for further information.

12 Dual switching requires dual 26, 32, or 42W compact fluorescent lamps. Allows independent switching control of each lamp through use of two electronic ballasts. Allows 50% power reduction when dual ballasts are independently wired and controlled.

13 Battery backup provides 90 minutes of supplemental light at 60% of initial rated lamp lumens. Must specify 26/32/42W Compact Fluorescent lamp.

14 Frosted secondary lens provided standard on 3SG, FTG, and CFG distributions.



INVUE • Customer First Center • 1121 Highway 74 South • Peachtree City, GA 30269 • TEL 770.486.4800 • FAX 770.486.4801

AVU032304



**GRENALD WALDRON ASSOCIATES**  
ARCHITECTURAL PO BOX 525 TEL 610 667 6330  
LIGHTING 260 HAVERFORD FAX 610 667 7658  
CONSULTANTS AVENUE  
NARBERTH PA  
19072 0525

THE UNIVERSITY OF NEW  
MEXICO  
ALBUQUERQUE CAMPUS

PROJECT No. 22027  
TYPE BF1



## BUILDING MOUNTED FIXTURE

**TYPE:** BF2

BUILDING MOUNTED FIXTURE  
-FOR RESIDENTIAL AREAS

**MANUFACTURER:**  
DESIGNPLAN LIGHTING, LTD.

**MODEL:**  
VERTIGO 1-VT1-8-H9-2-TBD-1-C-X-0

**LUMINAIRE DIMENSIONS: (LxWxH)**  
5-29/32" X 5-11/32" X 11-25/32"

**LAMP:**  
26 WATT TRIPLE COMPACT FLUORESCENT, 4-PIN

**FINISH:**  
TO BE DETERMINED

**MOUNTING HEIGHT:**  
RECESSED AT X ABOVE FINISH GRADE

### **SPECIFICATION:**

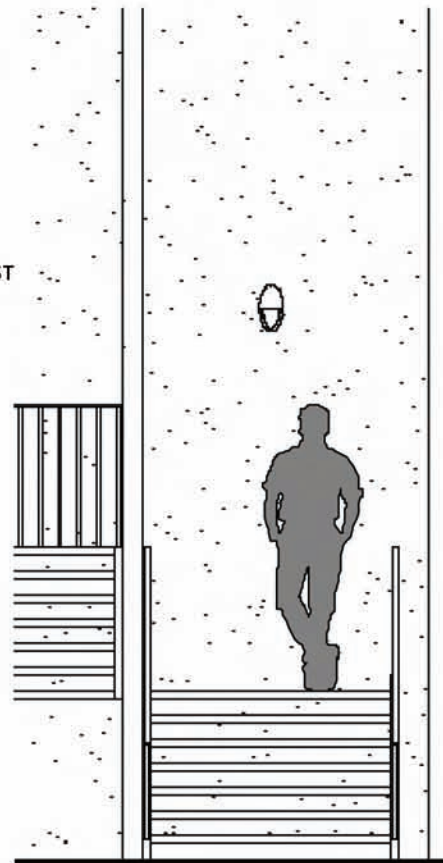
**HOUSING:** SINGLE PIECE DIECAST ALUMINUM WITH RAIN AND DUST TIGHT GASKET SEALS ON LENS GUARD. FIXTURE SHALL SURFACE MOUNT TO JUNCTION BOX. LENS GUARD TO HAVE BLACK OXIDE, CAPTIVE SCREWS.

**SHIELDING:** UV STABILIZED OPAL POLYCARBONATE DIFFUSER IN CAST ALUMINUM LENS GUARD.

**BALLAST:** ELECTRONIC HIGH POWER FACTOR WITH A STARTING TEMPERATURE OF -25°F.

**FINISHES:** TO BE FADE AND ABRASION RESISTANT, ELECTROSTATICALLY APPLIED, THERMALLY CURED, TGIC TEXTURED POLYESTER POWDERCOAT FINISH. COLOR TO BE SELECTED BY UNIVERSITY.

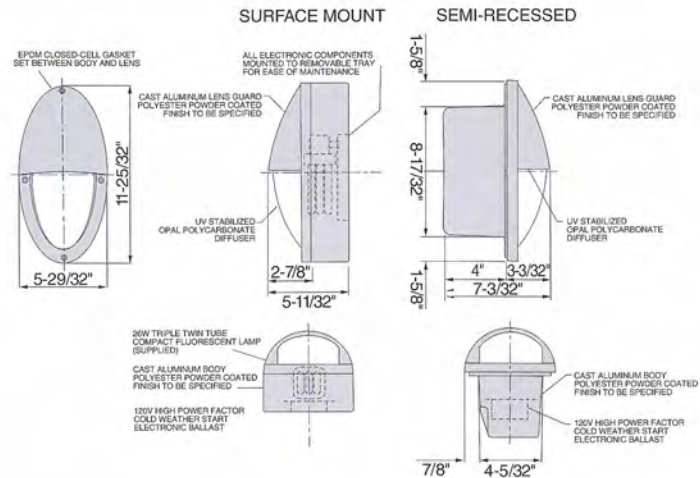
**LABELS:** UL WET LABEL, IP 65.





# vertigo 1

- Low copper alloy cast aluminum body and grill
- Lens is UV stabilized polycarbonate in a unique molded lens body for strength and durability
- -25° F cold weather start
- listed wet label IP 65
- Semi recessed fixture is **ADA** compliant



## ORDERING CHART

SERIES	Prod ID.	Lamp Type	Wattage	Body	Finish	Grill	Ballast	Lens	Options
VERTIGO 1	VT1	8-Fluorescent	<b>FOR SURFACE MOUNT OR SEMI RECESSED</b> J9-18W TRIPLE 4 PIN 27K K1-18W TRIPLE 4 PIN 35K K2-18W TRIPLE 4 PIN 41K H8-26W TRIPLE 4 PIN 27K H9-26W TRIPLE 4 PIN 35K R7-26W TRIPLE 4 PIN 41K	1 - Surface Mount No Conduit Entries 2 - Semi Recessed	00 - Semi Gloss Black 01 - Semi Gloss White 02 - Black Suede 03 - Grey 04 - Bronze 05 - Hammered Bronze 07 - Hammered Copper 10 - Matte Silver 17 - Granite 47 - Weathered Bronze 48 - Weathered Moss 49 - Good Earth 80 - Weathered Copper 81 - Weathered Iron 82 - Hammered Gunmetal 83 - Metallic Silver 84 - Aluminum 85 - Terracotta 86 - Metallic Gold 87 - Chrome 88 - Quick Silver 89 - Zinc Grey HB - Hand Painted Weathered Bronze HC - Hand Painted Weathered Copper 99 - Custom	1-Standard	C-120V-277V Elect. 2-347V Elect.	X-Opal	0 - None 4 - One Circuit Fusing 8 - Special Screws D - Black Oxide Screws G - Remote Emerg. Only

designplan

79 Trenton Avenue  
Frenchtown, NJ 08825

Tel: (908) 996-7710  
Fax: (908) 996-7042

1



**GRENALD WALDRON ASSOCIATES**

ARCHITECTURAL LIGHTING CONSULTANTS

PO BOX 525  
260 HAVERFORD AVENUE  
NARBERTH PA  
19072 0525

TEL 610 667 6330  
FAX 610 667 7658

THE UNIVERSITY OF NEW  
MEXICO  
ALBUQUERQUE CAMPUS

PROJECT No. 22027

TYPE BF2





# GRENALD WALDRON ASSOCIATES

ARCHITECTURAL  
LIGHTING  
CONSULTANTS

PO BOX 525  
260 HAVERFORD  
AVENUE  
NARBERTH PA  
19072 0525

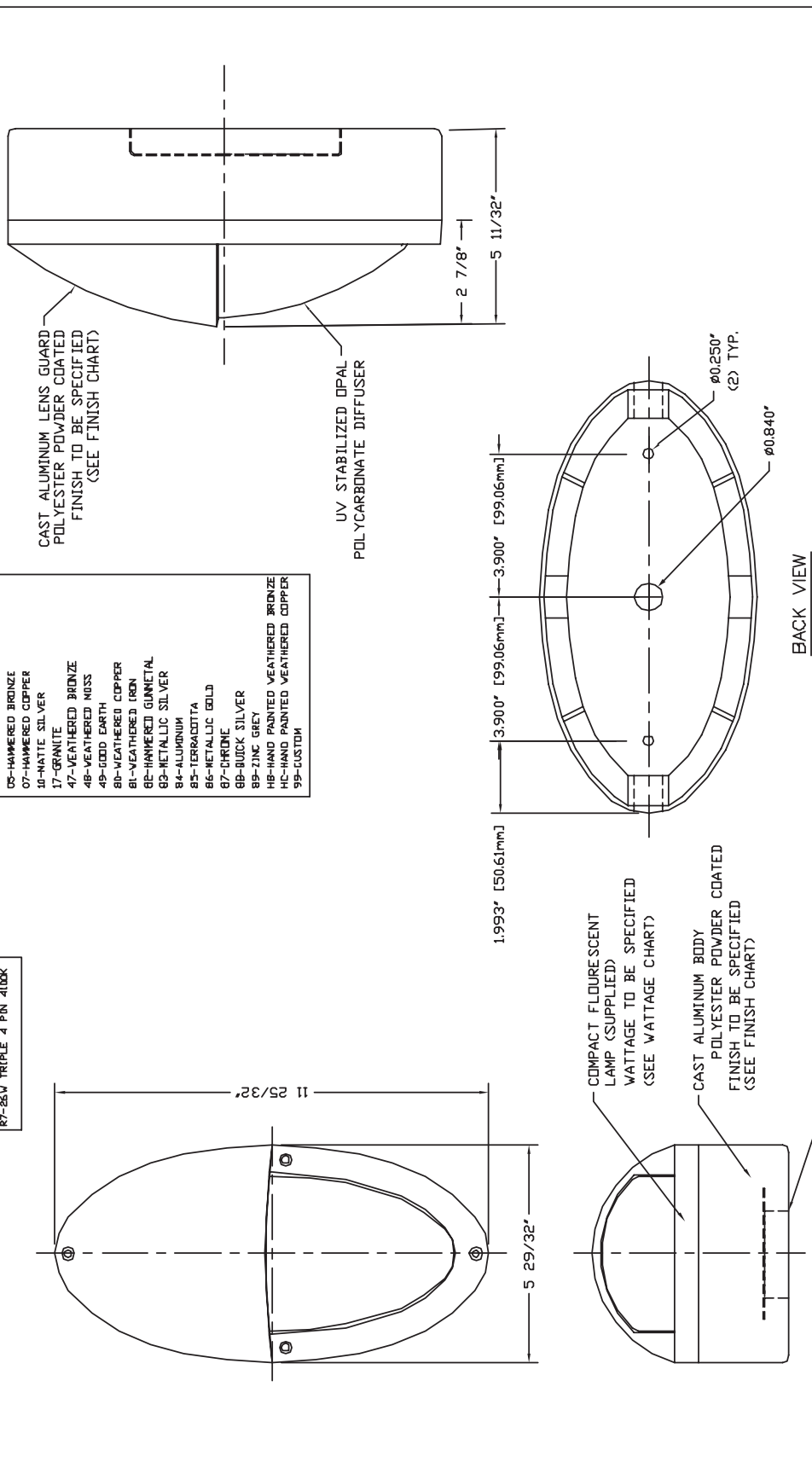
TEL 610 667 6330  
FAX 610 667 7658

THE UNIVERSITY OF NEW  
MEXICO  
ALBUQUERQUE CAMPUS

PROJECT No. 22027

TYPE BF2

SERIES	SERIES	LAMP TYPE	VATTAGE	BODY	FINISH	GRILL	BALLAST	LENS	OPTION
VERTIGO 1	XXX	8-FLUORESCENT	XX	X	XX	X	X	X	XX
	VT1		J9-1BW TRIPLE 4 PIN 2700K K1-1BW TRIPLE 4 PIN 3500K K2-1BW TRIPLE 4 PIN 4000K H8-2S4 TRIPLE 4 PIN 2700K H9-2S4 TRIPLE 4 PIN 3500K R7-2S4 TRIPLE 4 PIN 4000K	00-SEMI GLOSS BLACK 01-SEMI GLOSS WHITE 02-BLACK SUEDE 03-GRAY 04-BRONZE 05-HAMMERED BRONZE 07-HAMMERED COPPER 10-MATTE SILVER 17-GRANITE 47-WEATHERED BRONZE 48-WEATHERED NUSS 49-GOOD EARTH 80-WEATHERED COPPER 81-WEATHERED IRON 82-HAMMERED GUNMETAL 83-METALLIC SILVER 84-ALUMINUM 85-TERRACOTTA 86-METALLIC GOLD 87-CHROME 88-BUCK SILVER 89-ZINC GREY H8-HAND PAINTED WEATHERED BRONZE H9-HAND PAINTED WEATHERED COPPER 99-CUSTOM	1-STANDARD 2-347V ELECT. C-120-277V ELECT.	0-NONE 4-DINE CIRCUIT FUSING 8-NON STD. SCREWS D-BLACK OXIDE SCREWS G-REMOTE EMERG.			



Title: VERTIGO 1 VT1-8-1-1-X		Drawn By: m.g.	Date: 02/13/03
designplan		Sheet 1 of 1	Scale: 1:4
THIS PRINT IS THE PROPERTY OF designplan AND IS ISSUED UPON EXPRESS CONDITION THAT IT WILL NOT BE USED DIRECTLY OR INDIRECTLY IN ANYWAY DETRIMENTAL TO OUR INTERESTS, AND THAT IT WILL NOT BE DISCLOSED TO A THIRD PARTY WITHOUT THE PRIOR WRITTEN CONSENT OF designplan lighting		Dwg. No. VT1-S001	

ETL, cETL LISTED WET LABEL IP 65

NOTES:  
1. IT IS THE CONTRACTORS RESPONSIBILITY TO  
SUPPLY AND INSTALL SUITABLE MOUNTING METHOD

## BUILDING MOUNTED FIXTURE

**TYPE:** BM1

FULL CUTOFF BUILDING MOUNTED AREA LIGHT FIXTURE

**MANUFACTURER:**  
GARDCO LIGHTING

**MODEL:**  
101-FT-T70MH-VOLT-TBD-PCB-WS  
\* WS ONLY TO BE SPECIFIED WHEN SURFACE CONDUIT IS USED.

**LUMINAIRE DIMENSIONS: (LxWxH)**  
16-1/4" x 9" x 7"

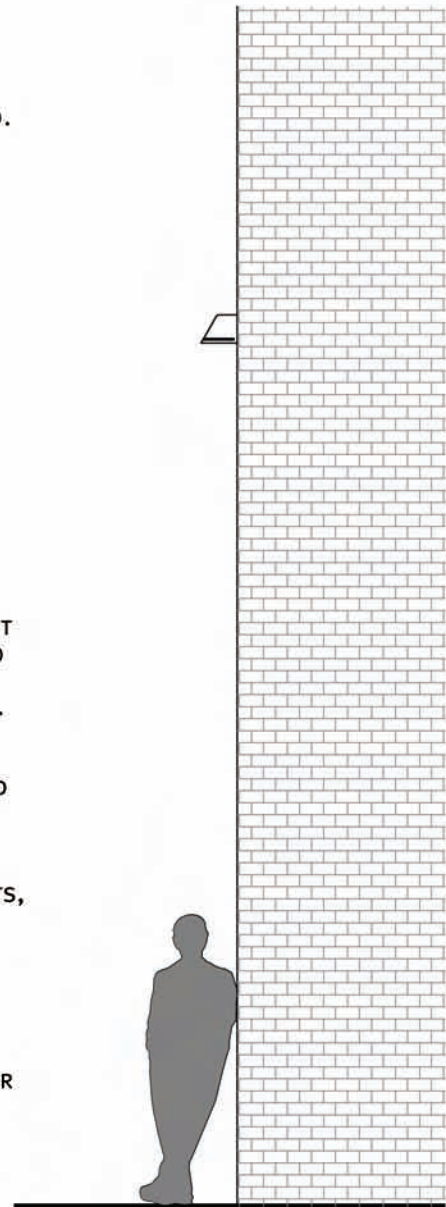
**LAMP:**  
70 WATT CERAMIC METAL HALIDE, T6

**FINISH:**  
TO BE DETERMINED

**MOUNTING HEIGHT:**  
SURFACE MOUNTED 12'-0" TO 25'-0" ABOVE FINISH GRADE.

### **SPECIFICATION:**

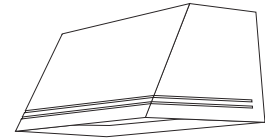
- HOUSING:** SINGLE PIECE DIECAST ALUMINUM WITH RAIN AND DUST TIGHT GASKET SEALS ON DOORFRAME. DOORFRAME TO BE DIECAST ALUMINUM GASKETED, WITH HINGED AND SECURED WITH 2 CAPTIVE STAINLESS STEEL FASTENERS.
- SHIELDING:** HEAT AND IMPACT RESISTANT 1/8" GLASS LENS AND ONE-PIECE GASKET WHICH ARE MECHANICALLY SECURED TO THE DOORFRAME WITH 4 GALVANIZED STEEL RETAINERS.
- REFLECTORS:** SPECULAR EXTRUDED AND FACETED ALZAK COMPONENTS, ELECTRO-POLISHED, ANODIZED AND SEALED.
- BALLAST:** ELECTRONIC HIGH POWER FACTOR WITH A STARTING TEMPERATURE OF -20°F.
- FINISHES:** FADE AND ABRASION RESISTANT, ELECTROSTATICALLY APPLIED, THERMALLY CURED, TGIC TEXTURED POLYESTER POWDERCOAT FINISH. COLOR TO BE SELECTED BY UNIVERSITY.
- LABELS:** UL WET LABEL.





# 100 LINE

## 101 PERFORMANCE SCNCE



The Gardco 101 Trapezoidal Wedge high performance sconce offers an excellent alternative to unsightly wall mounted fixtures. These architecturally refined luminaires are designed to integrate naturally to wall surfaces. The 101 luminaires are available with three (3) different distribution patterns - a wide throw, a medium throw and a forward throw. Each luminaire is designed to accept sources up to 175MH. Housings are sealed throughout, completely excluding moisture, dust, insects and contaminants.

### ORDERING

PREFIX	DISTRIBUTION	WATTAGE	VOLTAGE	FINISH	OPTIONS
101	FT	T70MH			PCB
<b>101</b> Trapezoidal Wedge	<b>FT</b> Forward Throw (Not Available with Fluorescent Lamps)	<i>Refer to Lamp/Voltage Charts below for available combinations</i>			<b>F</b> <b>WLU</b>
<b>101EM</b> Emergency Sconce Refer to configuration Chart below for available combinations	<b>WT</b> Wide Throw (Not Available with Fluorescent Lamps)			<b>BRP</b> <b>BLP</b> <b>WP</b> <b>NP</b> <b>BGP</b> <b>OC</b> <b>SC</b>	<b>F</b> <b>PCB</b> <b>QS</b> <b>Q924</b> <b>SL</b> <b>UT</b>
<b>101EMR</b> Remote Emergency Sconce Refer to configuration Chart below for available combinations	<b>MT</b> Medium Throw				<b>WS</b> <b>WS/UT</b> <b>WG</b> <b>B84C</b> <b>B84C-CAN</b>

LAMP/VOLTAGE CHART - 101

Voltage:	120	208	240	277	347	480
<b>E17</b>						
<b>50MH</b>	•			•		
<b>70MH</b>	•			•	•	
<b>100MH</b>	•	•	•	•	•	•
<b>150MH</b>	•	•	•	•	•	
<b>175MH</b>	•	•	•	•	•	•
<b>35HPS</b>	•					
<b>50HPS</b>	•			•		
<b>70HPS</b>	•	•	•	•	•	•
<b>100HPS</b>	•	•	•	•	•	•
<b>150HPS</b>	•	•	•	•	•	
<b>50CMHE</b>	•			•		
<b>70CMHE</b>	•			•		
<b>100CMHE</b>	•			•		
<b>Fluorescent</b>						
<b>26QF<sup>1</sup></b>	•	•	•	•	•	•
<b>226QF<sup>1</sup></b>	•	•	•	•	•	•
<b>32TRF<sup>1</sup></b>	•	•	•	•	•	•
<b>42TRF<sup>1</sup></b>	•	•	•	•	•	•
<b>242TRF<sup>1</sup></b>	•	•	•	•	•	•

Combinations marked with a dot are available for ordering.  
MH - Metal Halide CMHE - Ceramic Metal Halide with Electronic Ballast  
HPS - High Pressure Sodium QF - Quad Fluorescent  
TRF - Triple Tube Fluorescent

- 26QF, 32TRF and 42TRF types feature an electronic fluorescent ballast that accepts 120V through 277V, 50hz or 60hz input.
- Contact factory for Fluorescent Dimming

CONFIGURATION CHART - 101EM

	Distribution			Voltage						
	FT	WT	MT	120	208	240	277	347	480	
<b>Fluorescent</b>										
<b>226QF</b>			•	•			•			
<b>42TRF</b>			•	•			•			

CONFIGURATION CHART - 101EMR

	Distribution			Voltage						
	FT	WT	MT	120	208	240	277	347	480	
<b>Fluorescent</b>										
<b>226QF</b>			•	•			•	•		
<b>42TRF</b>			•	•			•	•		
<b>242TRF</b>			•	•			•	•		

#### FINISH:

<b>BRP</b>	Bronze Paint
<b>BLP</b>	Black Paint
<b>WP</b>	White Paint
<b>NP</b>	Natural Aluminum Paint
<b>BGP</b>	Beige Paint
<b>OC</b>	Optional Color Paint Specify RAL designation as shown in Color Selection Guide, ex: OC-RAL7024
<b>SC</b>	Special Color Paint (Specify, Must supply color chip)

#### OPTIONS:

<b>F</b>	Fusing (120V/277V only)
<b>PCB</b>	Button Type Photocontrol (n/a w/480V)
<b>QS</b>	Quartz Standby (HID only, N/A with CMHE Ballasts or with 175MH-480V)
<b>Q924</b>	Quartz Emergency (HID, WT Optics only, 150w max.)
<b>SL</b>	Solite® Diffusing Lens
<b>UT</b>	5° Uplight
<b>WLU</b>	Wet Location Door for Inverted Mounting (Not available with WG option)
<b>WS</b>	Wall Mounted Box for Surface Conduit
<b>WS/UT</b>	Wall Mounted Box for Surface Conduit w/5° Uplight
<b>WG</b>	Wire Guard (Not available with WLU option)
<b>B84C</b>	Bodine Remote Emergency Pack (EMR luminaires only, Must be ordered here or supplied by others)
<b>B84C-CAN</b>	Bodine Remote Emergency Pack - Canada (EMR luminaires only, Must be ordered here or supplied by others)

Gardco Lighting reserves the right to change materials or modify the design of its product without notification as part of the company's continuing product improvement program.

© Copyright Gardco Lighting 2001-2004. All Rights Reserved. International Copyright Secured.  
Solite is a Registered Trademark of AFG Industries

2661 Alvarado Street  
San Leandro, CA 94577  
800/227-0758  
510/357-6900 in California  
Fax: 510/357-3088  
sitelighting.com

Genlyte Thomas Group LLC



**GRENALD WALDRON ASSOCIATES**  
ARCHITECTURAL PO BOX 525 TEL 610 667 6330  
LIGHTING 260 HAVERFORD FAX 610 667 7658  
CONSULTANTS AVENUE  
NARBERTH PA  
19072 0525

THE UNIVERSITY OF NEW  
MEXICO  
ALBUQUERQUE CAMPUS

PROJECT No. 22027

TYPE BM1

# 100 LINE

## 101 PERFORMANCE SCNCE

### SPECIFICATIONS

**GENERAL:** Each Gardco 101 Line luminaire is a wall mounted cutoff luminaire for high intensity discharge or compact fluorescent lamps. Internal components are totally enclosed in a rain-tight, dust-tight and corrosion resistant housing. The housing, back plate and door frame are diecast aluminum. A choice of three (3) optical systems is available. Luminaires are suitable for wet locations (damp locations if inverted).

**HOUSING:** Single-piece soft trapezoidal housings are diecast aluminum. A memory retentive gasket seals the housing with the doorframe to exclude moisture, dust, insects and pollutants from the optical system. A black, diecast ribbed backplate dissipates heat for longer lamp and ballast life.

**DOOR FRAME:** A single-piece diecast aluminum door frame integrates to the housing form. The door frame is hinged closed and secured to the housing with two (2) captive stainless steel fasteners. The heat and impact resistant 1/8" tempered glass lens and one-piece gasket are mechanically secured to the door frame with four (4) galvanized steel retainers.

**OPTICAL SYSTEMS:** Reflectors are composed of specular extruded and faceted Alzak® components, electropolished, anodized and sealed. Reflector segments are set in arc tube image duplicating patterns to achieve the wide throw, forward throw or medium throw downlight distributions.

**ELECTRICAL: Standard Luminaires:** Each high power factor ballast is the separate component type, capable of providing reliable lamp starting down to -20° F. Component-to-component wiring within the luminaire will carry no more than 80% of rated current and is listed by UL for use at 600 VAC at 150°C or higher. Plug disconnects are listed by UL for use at 600 VAC, 15A or higher.

Standard and dimming fluorescent units have a starting temperature of 0°F (-18°C). Dimming range is 15% to 100% Standard fluorescent ballasts are solid state.

**EM Luminaires:** Electronic fluorescent ballasts are high power factor. Sockets are high temperature polycarbonate with brass contacts. In the event of power interruption, integral battery pack will power (1) 42W or (2) 26W compact fluorescent lamps at reduced light levels. Maintenance free battery is rated for ambient temperatures down to 0°C. Indicator light is visible through the lens. A test switch is accessible through the door assembly.

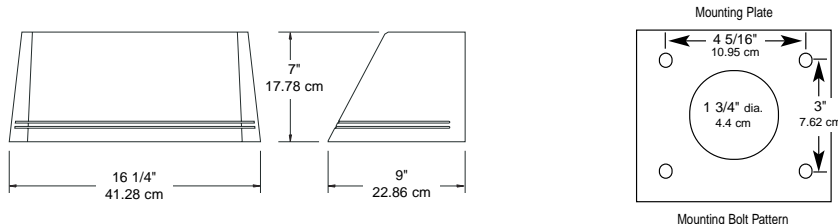
**EMR Luminaires:** Electronic fluorescent ballasts are high power factor. Sockets are high temperature PBT with brass contacts. A 7.5', 11 wire, quick disconnect assembly is provided for wiring through conduit (by others) to a Bodine B84C fluorescent emergency ballast. The B84C fluorescent emergency ballast is not provided by Gardco unless the B84C Option is specified on the order to the factory. In the event of power interruption, The remote battery pack (B84C) will power (1) 42W or (2) 26W compact fluorescent lamp at reduced light levels. Maintenance free battery is rated for ambient temperatures down to 0°C. Indicator light is visible through the lens. A test switch is accessible through the door assembly.

**LAMPHOLDER:** Pulse rated medium base sockets are glazed porcelain with nickel plated screw shell. Fluorescent sockets are high temperature plastic (PBT) with brass alloy contacts.

**FINISH:** Each standard color luminaire receives a fade and abrasion resistant, electrostatically applied, thermally cured, triglycidic isocyanurate (TGIC) textured polyester powdercoat finish. Standard colors include bronze (BRP), black (BLP), white (WP), natural aluminum (NP) and beige (BGP). Consult factory for specs on custom colors.

**LABELS:** All fixtures bear UL or CUL (where applicable) labels. Lens down application is Wet Location and lens up is Damp Location, except when using the optional inverted Wet Location components.

### DIMENSIONS



Note: Mounting plate center is located in the center of the luminaire width and 3.5" above the luminaire bottom (lens down position). Splices must be made in the J-box (by others). Mounting plate must be secured by max. 5/16" diameter bolts (by others) structurally to the wall.

Gardco Lighting reserves the right to change materials or modify the design of its product without notification as part of the company's continuing product improvement program.

© Copyright Gardco Lighting 2001-2004. All Rights Reserved. International Copyright Secured. Solite is a Registered Trademark of AFG Industries

2661 Alvarado Street  
San Leandro, CA 94577  
800/227-0758  
510/357-6900 in California  
Fax: 510/357-3088  
sitelighting.com

Genlyte Thomas Group LLC



#### GRENALD WALDRON ASSOCIATES

ARCHITECTURAL  
LIGHTING  
CONSULTANTS

PO BOX 525  
260 HAVERFORD  
AVENUE  
NARBERTH PA  
19072 0525

TEL 610 667 6330  
FAX 610 667 7658

THE UNIVERSITY OF NEW  
MEXICO  
ALBUQUERQUE CAMPUS

PROJECT No. 22027

TYPE BM1



## LANDSCAPE FIXTURE

**TYPE:** EF1

GROUND MOUNTED LANDSCAPE FIXTURE

**MANUFACTURER:**  
B-K LIGHTING

**MODEL:**  
EV-59-BZP-10-11-A-HP2-H35E-MT

**LUMINAIRE DIMENSIONS: (LxW)**  
7" X 3"DIA

**LAMP:**  
39 WATT CERAMIC METAL HALIDE, PAR20 30° FLOOD

**FINISH:**  
BRONZE POWDERCOAT

### **SPECIFICATION:**

**HOUSING:** MACHINED ALUMINUM WITH COMPLETELY SEALED OPTICAL COMPARTMENT, AND FACTORY SEALED CLEAR TEMPERED GLASS LENS GUARD. FIXTURE SHALL HAVE A KNUCKLE MOUNTING SYSTEM, WHICH ALLOWS FOR HORIZONTAL AND VERTICAL ADJUSTMENT WITHOUT REMOVING THE BALLAST COVER. FIXTURE SHALL BE MOUNTED TO IN GROUND, COMPOSITE BALLAST HOUSING WITH MACHINED ALUMINUM FACEPLATE. BALLAST HOUSING TO BE WATERTIGHT WITH HIGH TEMPERATURE SILICONE O-RINGS AND ANTI-SIPHON WIRE PASS THRU WITH QUICK DISCONNECTS.

**SHIELDING:** 45° MACHINED ALUMINUM SHIELD WITH SPREAD LENS AND HONEYCOMB BAFFLE.

**BALLAST:** ELECTRONIC HIGH POWER FACTOR, MULTI-TAP, WITH A STARTING TEMPERATURE OF 0°F. BALLAST HOUSING TO HAVE CAPTIVE STAINLESS STEEL FLAT HEAD SCREWS.

**FINISHES:** TO BE FADE AND ABRASION RESISTANT, ELECTROSTATICALLY APPLIED, THERMALLY CURED, SATIN POLYESTER POWDER COAT FINISH. COLOR TO BE BRONZE.

**LABELS:** UL WET LABEL, IP 65.





**GRENALD WALDRON ASSOCIATES**  
ARCHITECTURAL PO BOX 525 TEL 610 667 6330  
LIGHTING 260 HAVERFORD FAX 610 667 7658  
CONSULTANTS AVENUE  
NARBERTH PA  
19072 0525

THE UNIVERSITY OF NEW  
MEXICO  
ALBUQUERQUE CAMPUS

PROJECT No. 22027

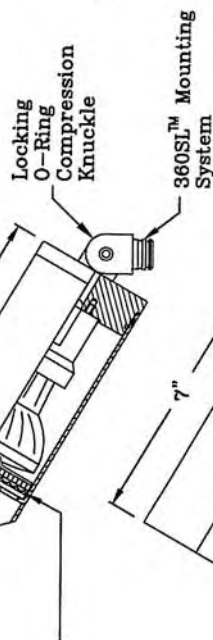
TYPE EF1

For Use with 35W, 120V or  
277V Metal Halide Ballast. See  
Ballast Submittal Sheets For  
Ballast Ordering Information.

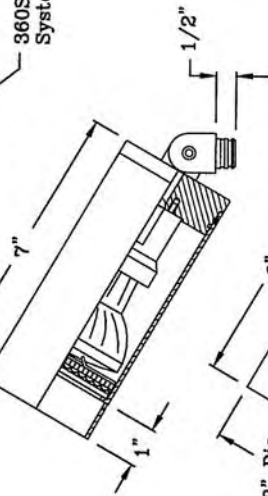
### STYLE A

Clear Lens (Standard)

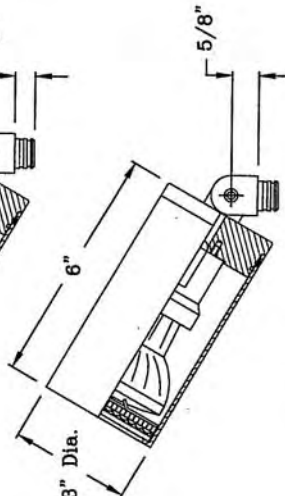
Optional Lenses  
(Up to Two can be Specified)



### STYLE B



### STYLE C



### Features:

- All Precision Machined Aluminum Construction.
- Locking O-Ring Compression Knuckle (THE L.O.C.K.<sup>TM</sup>) Allows Vertical to Horizontal Aiming and Provides Integral, Sealed Wireway and 360SL Mounting System.
- Medium Base, Pulse Rated Lampholder With 250°C, 18 Ga. Wire Leads (Leads Extend 6" Beyond Mounting Knuckle).
- Utilizes 35W PAR20 Metal Halide Lamps.
- Completely Sealed Optical Compartment, Clear Tempered Glass Lens, Factory Sealed.
- Tamperproof Design, Utilizes a Single, Flush Mtd. Hex Screw.
- Polyester Powdercoat Finishes Standard. (Specify)

### CATALOG NUMBER LOGIC

EXAMPLE: EV - 58 - SAP - 10 - 11 - A - HP2-H35M-277 - CPC

Series:

Lamp Type:

0 - By Others

58 - PAR20 Metal Halide/SP(35W), 10° Spot

59 - PAR20 Metal Halide/FL(35W), 30° Flood

Finish:

Powdercoat	Satin	Wrinkle
Bronze	BZP	BZW
Black	BLP	BLW
White (Gloss)	WHP	WHW
Aluminum	SAP	—
Verde	—	VER

Lens Type:

9 - Clear (Standard)

10 - Spread

13 - Rectilinear

Shielding:

11 - Honeycomb Baffle

Cap Style:

A - 45°

B - 90°

C - Flush

Ballast Style and Input Voltage:

(See Ballast Drawings For Specification Information)

HP2-H35M-120 or 277 - (35W) Recessed In Grade Magnetic

HP2RM-H35E-MT\* - (35W) Recessed In Grade Electronic

HP2RM-H35M-120 or 277 - (35W) Recessed Remote In Grade Magnetic

HP2RM-H35E-MT\* - (35W) Recessed Remote In Grade Electronic

PC-H35M-120 or 277 - (35W) Power Pipe II Above Grade Magnetic

RM-H35M-120 or 277 - (35W) Screw Cover Remote Wall Mount Magnetic

RM-H35E-MT\* - (35W) Screw Cover Remote Wall Mount Electronic

TMB-H35E-MT\* - (35W) Tree Strap Mount Electronic

TMB-H35E-MT\* - (35W) Pole Top or Tenon Mounted Electronic

\*MT = 120/208/240/277 Multi Tap

Options:

CPC - Concrete Pour Collar (HP2 & HP2RM Only)

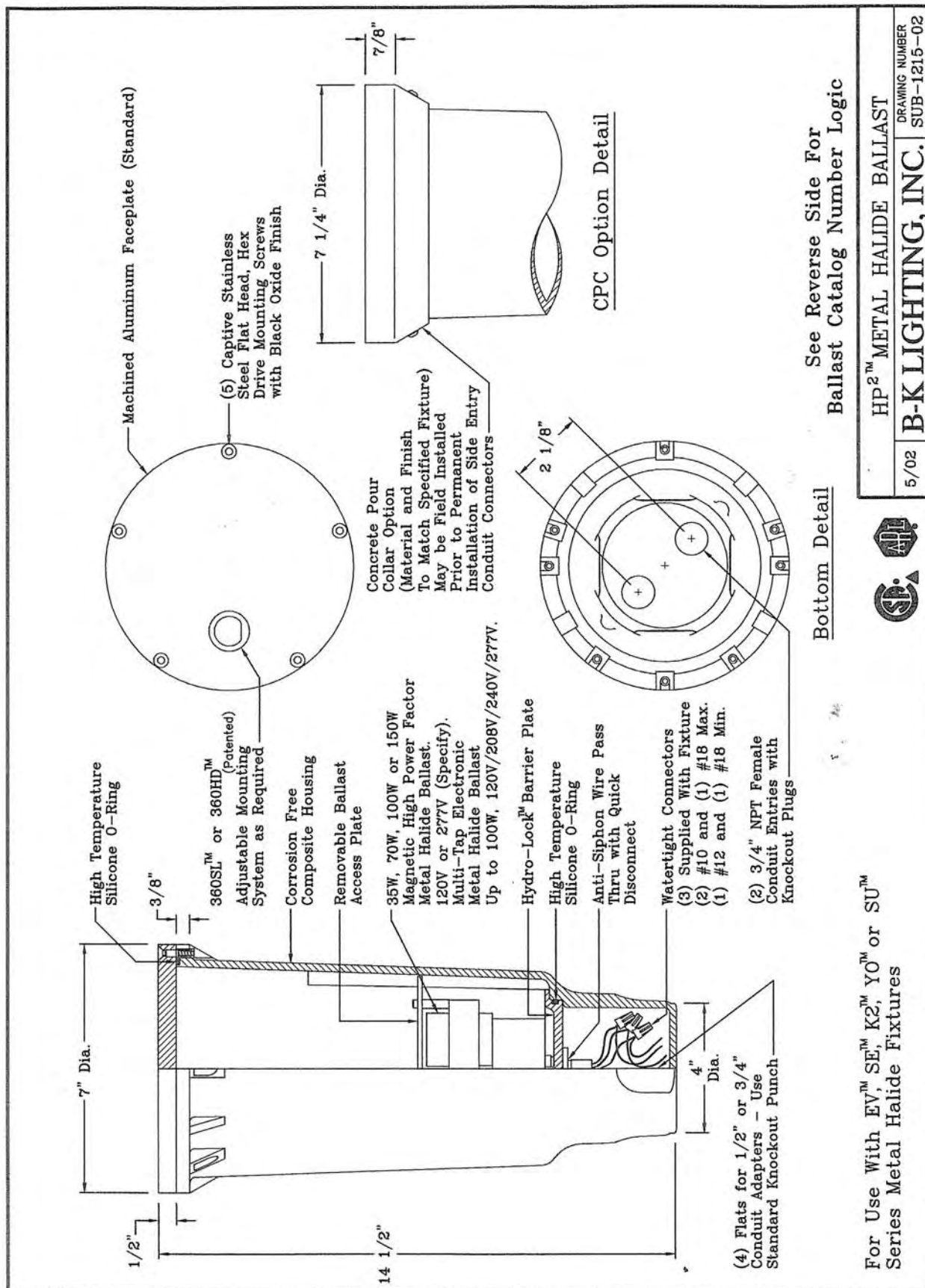
PAR20, 35W Metal Halide



EVEREST SERIES<sup>TM</sup>

8/03 B-K LIGHTING, INC. DRAWING NUMBER  
SUB-1135-09





**GRENALD WALDRON ASSOCIATES**  
 ARCHITECTURAL LIGHTING CONSULTANTS  
 PO BOX 525  
 260 HAVERFORD AVENUE  
 NARBERTH PA 19072 0525  
 TEL 610 667 6330  
 FAX 610 667 7658

THE UNIVERSITY OF NEW MEXICO  
 ALBUQUERQUE CAMPUS

PROJECT No. 22027

TYPE EF1